



Wireless magnetic sensor RF RC M30

Features/Options:

- Thermoplastic or stainless steel enclosure
- RF RC M30 ... : Sensor with reed contact
- RF GS M30 ... : Sensor based on GMR effect - on request
- RF HS M30 ... : Sensor with Hall sensor - on request
- sWave® wireless technology (SW868/SW915/SW917/SW922)
- Power supply by Lithium battery (replaceable)
- No wiring and pipe laying required
- Easy programming of receiver
- Output signal can be individually configured at the receiver

Notes

- 2 mounting nuts are included in delivery
- The actuator is not included in the delivery of the switches

Technical data

Applied standards	EN 60947-5-1; EN 61000-6-2, -6-3, EN 61000-4-2, -4-20; EN 301 489-1; EN 301 489-3; EN 300 220-1; EN 300 220-2
Enclosure	Stainless steel 1.4539 or PVC-C
Type of installation	flush, in not ferromagnetic material
Degree of protection	IP 67 to IEC/EN 60529
Protocol	sWave®
Ambient temperature	-25 °C ... +65 °C
Switching system	Reed contact MK17, GMR sensor or Hall element
Switching distances	M 100: $s_n = 15$ mm; M 30 Niro: $s_n = 30$ mm
Hysteresis (approx.)	1 mm
Voltage supply	Lithium battery CR 2032 (replaceable)
Current absorption	without transmissions: Reed contact: approx. 1 μ A; GMR sensor: <5 μ A; Hall sensor: <10 μ A
Nominal capacity	230 mAh
Frequency	868.3 MHz (Europe) or 915 MHz (USA, Canada and Mexico) or 917 MHz (Brazil) or 916.5 MHz (Japan)
Data rate	66 kbps
Wireless range	SW868/915/917: max. 450 m outside, max. 40 m inside SW922: max. 150 m outside, max. 20 m inside
Mechanical life	> 1 million operations

Errors and omissions excepted.



Wireless magnetic sensor RF RC M30

Technical data

Battery life	unused: approx. 10 years used with reed contact: approx. 6 years at 1 actuation per minute used with Hall sensor: approx. 2 years at 1 actuation per minute
Actuating time	min. 80 ms
Note	status signal configurable ex works; transmission of battery voltage
Wireless approvals	Europe: RED 2014/53/EU USA: FCC Part 15.247: XK5-RF Rx SW915 Canada: IC RSS-210: 5158A-RF Rx SW 915 Mexico: IFT - RCPSTRF17-1886 Brazil: ANATEL 04172-18-06718 Japan: ARIB STD-T108: 204-610002

Ordering details



Stainless steel enclosure

Reed contact

Type

RF RC M30 SW868 NIRO
RF RC M30 SW915 NIRO
RF RC M30 SW917 NIRO
RF RC M30 SW922 NIRO

Material no.

1363715
1364786
1486388
1423350



Thermoplastic enclosure

Reed contact

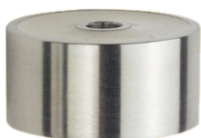
Type

RF RC M30 SW868 KST
RF RC M30 SW915 KST
RF RC M30 SW917 KST
RF RC M30 SW922 KST

Material no.

1349227
1362227
1248972
1372330

Actuators



M 30 Niro 11265

Type

M 30 Niro

Material no.

1189024

Errors and omissions excepted.



Wireless magnetic sensor RF RC M30

Actuators



M 100 N 13026

Type
M 100 N

Material no.
1042609