



## Ex magnetic sensors Ex RC M20 KST -60°C

### Features/Options:

- Ex zone 1 and 21
- Cold-resistant down to -60 °C
- Thermoplastic enclosure
- 1 Reed contact
- Actuation from front
- With pre-wired cable
- N.B.: Please state required international approvals with your order!

### Notes

- 2 mounting nuts are included in delivery
- The actuator is not included in the delivery of the switches

### Technical data

Standards	EN 60947-5-1; EN 60079-0; EN 60079-18
Enclosure	glass-fibre reinforced, shock-proof thermoset material, self-extinguishing UL 94-V0
Actuator	series M permanent magnet
Degree of protection	IP 67 (EN 60079-0 + IEC/EN 60529) IP 66, IP 68, IP 69 (IEC/EN 60529) IP 69K (ISO 20653)
Contact material	Rhodium
Switching system	reed contacts
Switching elements	change-over contact
Connection	pre-wired cable, Silicone SIHF
Cable cross-section	3 x 0.75 mm <sup>2</sup>
Cable length	2, 5 or 10 m
Switching voltage	250 VAC
Switching current	1 A
Short-circuit current I <sub>k</sub>	max. 2 A
Switching capacity	max. 50 W
Utilisation category	AC-12; DC-12
Bounce duration	0,3 ... 0,6 ms
Ambient temperature	-60 °C ... +70 °C
Mechanical life	> 1 million operations
Electrical life	10 <sup>6</sup> ... 10 <sup>9</sup> operations
Vibration resistance	10 ... 50 g
Impact energy	max. 7 J

Errors and omissions excepted.



## Ex magnetic sensors Ex RC M20 KST -60°C

### Technical data

#### Ex marking

II 2G Ex mb IIC T6 Gb,  
II 2D Ex mb IIIC T80 °C Db  
IECEX Ex mb IIC T6 Gb  
Ex mb IIIC T80 °C Db

#### Approvals

DMT 01 ATEX E 058 X  
IECEX BVS 07.0007 X



### Ordering details



Actuation from front  
1 change-over contact

Type  
Ex RC M20 1W KST - 2m -60°C  
Ex RC M20 1W KST - 5m -60°C  
Ex RC M20 1W KST - 10m -60°C

Material no.  
1445629  
1445631  
1445633

### Actuators



M 20 U 13034

Type  
M 20 U

Material no.  
1033963



M 50 NU 13033

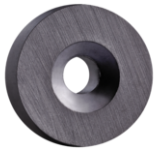
Type  
M 50 NU

Material no.  
1033965



## Ex magnetic sensors Ex RC M20 KST -60°C

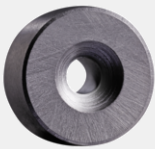
### Actuators



M 100 NU 13032

Type  
M 100 NU

Material no.  
1033966



M 200 NU 13031

Type  
M 200 NU

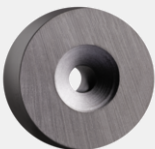
Material no.  
1033967



M 200 UB 13030

Type  
M 200 UB

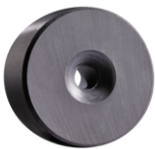
Material no.  
1033975



M 300 NU 13029

Type  
M 300 NU

Material no.  
1033968



M 400 NU 13028

Type  
M 400 NU

Material no.  
1033970



M 400 UB 13027

Type  
M 400 UB

Material no.  
1033982



## Ex magnetic sensors Ex RC M20 KST -60°C

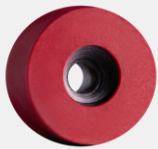
### Actuators



M 100 N 13026

Type  
M 100 N

Material no.  
1042609



M 200 N 13025

Type  
M 200 N

Material no.  
1042610



M 300 N 13024

Type  
M 300 N

Material no.  
1042617



M 500 13023

Type  
M 500

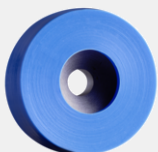
Material no.  
1042611



M 700 N 13022

Type  
M 700 N

Material no.  
1042612



M 100 S 13021

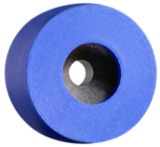
Type  
M 100 S

Material no.  
1042615



## Ex magnetic sensors Ex RC M20 KST -60°C

### Actuators



M 200 S 13020

Type  
M 200 S

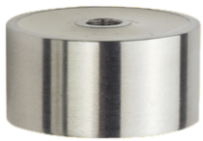
Material no.  
1042616



M 300 S 13019

Type  
M 300 S

Material no.  
1042618



M 30 Niro 11265

Type  
M 30 Niro

Material no.  
1189024



Disc magnet 15 x 4

Type  
Disc magnet 15 x 4 mm

Material no.  
1452248



Disc magnet 23 x 4

Type  
Disc magnet 23 x 4 mm

Material no.  
1452242